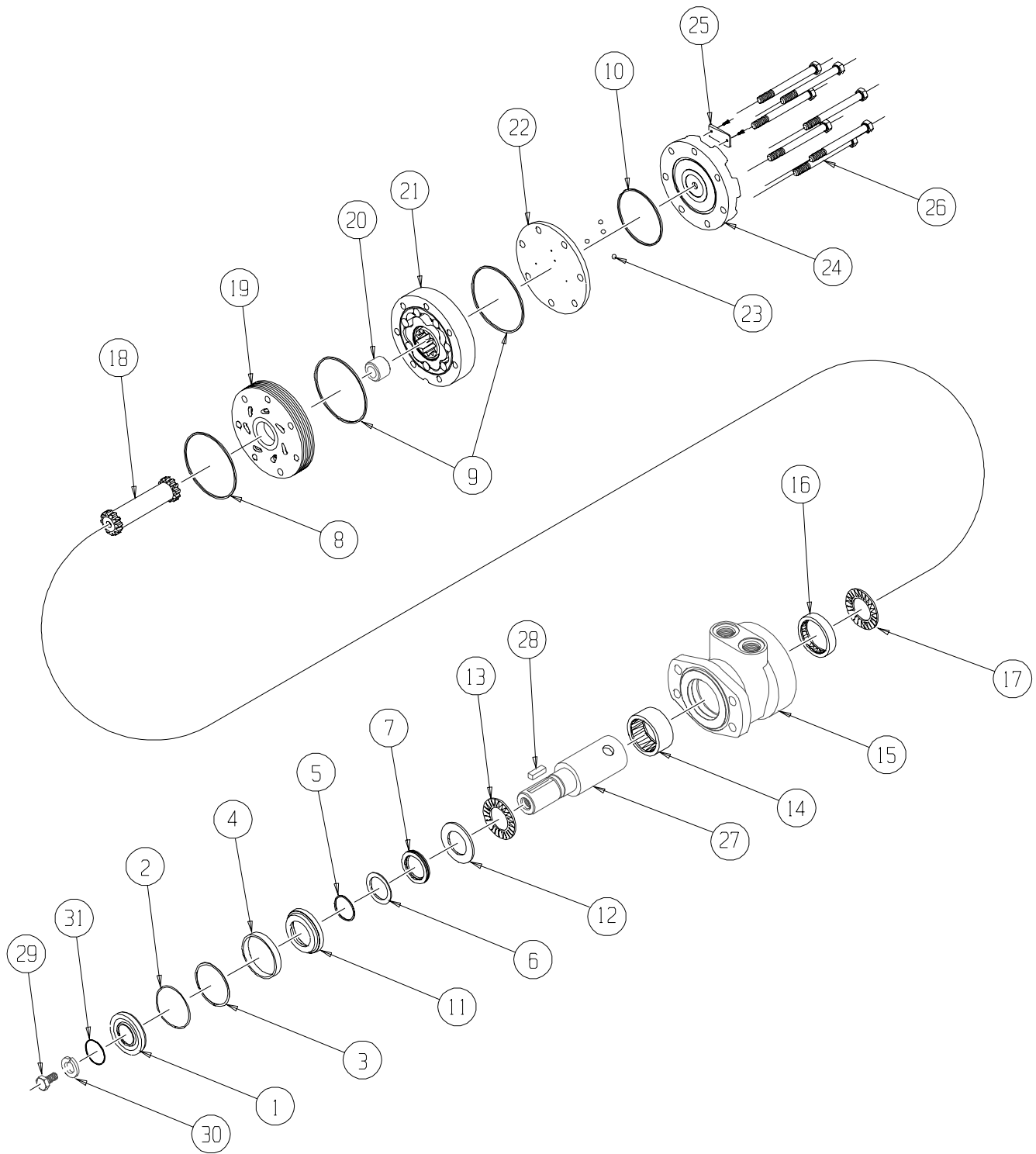


RE (500) Series



RE (500) SERIES MOTOR COMPONENTS

SEAL KIT 500444112B

DESCRIPTION	EXP VIEW ITEM #	KIT #
DUST SEAL	1	ITEMS # 1-10, #14, #16 & EXCLUDER SEAL INCLUDED IN SEAL KIT 500444112B
WIRE RING	2	
METAL BACKUP SHIM	3	
HIGH PRESSURE SEAL	4	
METAL BACKUP SHIM	5	
POLYAMIDE SEAL (2)	6	
SHAFT SEAL (2)	7	
REAR HOUSING SEAL	8	
BODY SEALS (2)	9	
ENDCOVER SEAL	10	
EXCLUDER SEAL	NOT SHOWN	
SEAL CARRIER	11	ITEMS #11-12 INCLUDED IN SEAL KIT 500444003
THRUST WASHER	12	

MISCELLANEOUS KITS

DESCRIPTION	EXPLODED VIEW ITEM #	KIT
REAR THRUST BEARING	17	500018059
FRONT HOUSING BEARING (1" WIDE)	14	500018003
REAR HOUSING BEARING (.5" WIDE)	16	500018002
FORWARD MANIFOLD (CCW OR "0")	19	500015006
REVERSE MANIFOLD (CW OR "1")	19	500015007
BALANCE PLATE (3 BALLS INCLD)	22	500012001
STEEL BALL	23	500018048
ENDCOVER	24	500016001
FRONT THRUST BEARING	13	500018252
DUST SEAL	1	500018006
1000 PSI RELIEF VALVE	NOT SHOWN	500018228
2000 PSI RELIEF VALVE	NOT SHOWN	500018231
3000 PSI RELIEF VALVE	NOT SHOWN	500018221
1.00-20 UNEF SLOTTED NUT	NOT SHOWN	500449304
1.00-20 UNEF SOLID NUT	NOT SHOWN	500449303
1.00-20 UNEF LOCK NUT	NOT SHOWN	300339303P

ROTORS, DRIVE LINKS AND SPACERS, AND BOLTS

WHEN CHANGING MOTOR DISPLACEMENTS, A MATCHING ROTOR AND BOLT SET KIT MUST BE ORDERED. A NEW DRIVE LINK KIT MAY BE NECESSARY. DRIVE LINK SPACERS ARE INCLUDED IN DRIVE LINK KITS, BUT MAY ALSO BE ORDERED SEPERATELY BY USING THE DRIVE LINK SPACER KIT NUMBER.

EXPLODED VIEW ITEM #	21	21	18	20	26
DISPLACEMENT	STANDARD ROTOR KIT	FREETURN ROTOR KIT	DRIVE LINK KIT	DRIVE LINK SPACER KIT	BOLT SET KIT
120	500087005	500087008	500014009	---	500445006
160	500137005	500137011	500014009	---	500445006
200	500167004	500167011	500014009	500018075	500445012
230	500147002	500147004	500014009	500018185	500445014
260	500227000	500227004	500014039	---	500445014
300	500247005	500247011	500014007	---	500445018
350	500207000	500207004	500014008	500018076	500445026
375	500307005	500307011	500014008	---	500445024
470	500357003	500357005	500014008	500018076	500445026
540	500407005	500407011	500014008	500018077	500445032
750	500607005	500607011	500014008	500018078	500445045

HOUSING KITS

(EXPLODED VIEW ITEM #15)

STANDARD HOUSING KITS INCLUDE THE FRONT BEARING (#14) AND THE REAR BEARING (#16) INSTALLED IN THE HOUSING.

DESCRIPTION	HOUSING KIT	DESCRIPTION	HOUSING KIT
#F31- 4-HOLE W/O PILOT & RS 4-HOLE BOLT PTRN.	500130223	#A58- 6-HOLE SAE "A" STYLE WITH 1/2" BSP.F	500131923
#W38- WHEEL MOUNT WITH 1/2" BSP.F	500130523	#W38- WHEEL MOUNT W/ RELIEF PORT W/ 1/2" BSP.F	500133523
#A38- 4-HOLE SAE "A" STYLE WITH 1/2" BSP.F	500130623	#A38- 4-HOLE SAE "A" W/ RLF. PRT & 1/2" BSP.F	500133623
#W31- WHEEL MOUNT WITH 7/8" O-RING	500130723	#W31- WHEEL MOUNT W/ RLF. PORT & 7/8" O-RING	500133723
#A31- 4-HOLE SAE "A" STYLE WITH 7/8" O-RING	500130823	#A31- 4-HOLE SAE "A" W/ VAL. CAVITY & 7/8" O-RING	500133823
#A11- 2-HOLE SAE "A" STYLE WITH 7/8" O-RING	500131623	#A51- 6-HOLE SAE "A" W/ VAL. CAVITY & 7/8" O-RING	500134823
#A18- 2-HOLE SAE "A" STYLE WITH 1/2" BSP.F	500131723	#A58- 6-HOLE SAE "A" W/ VAL. CAVITY & 1/2" BSP.F	500134923
#A51- 6-HOLE SAE "A" STYLE WITH 7/8" O-RING	500131823		

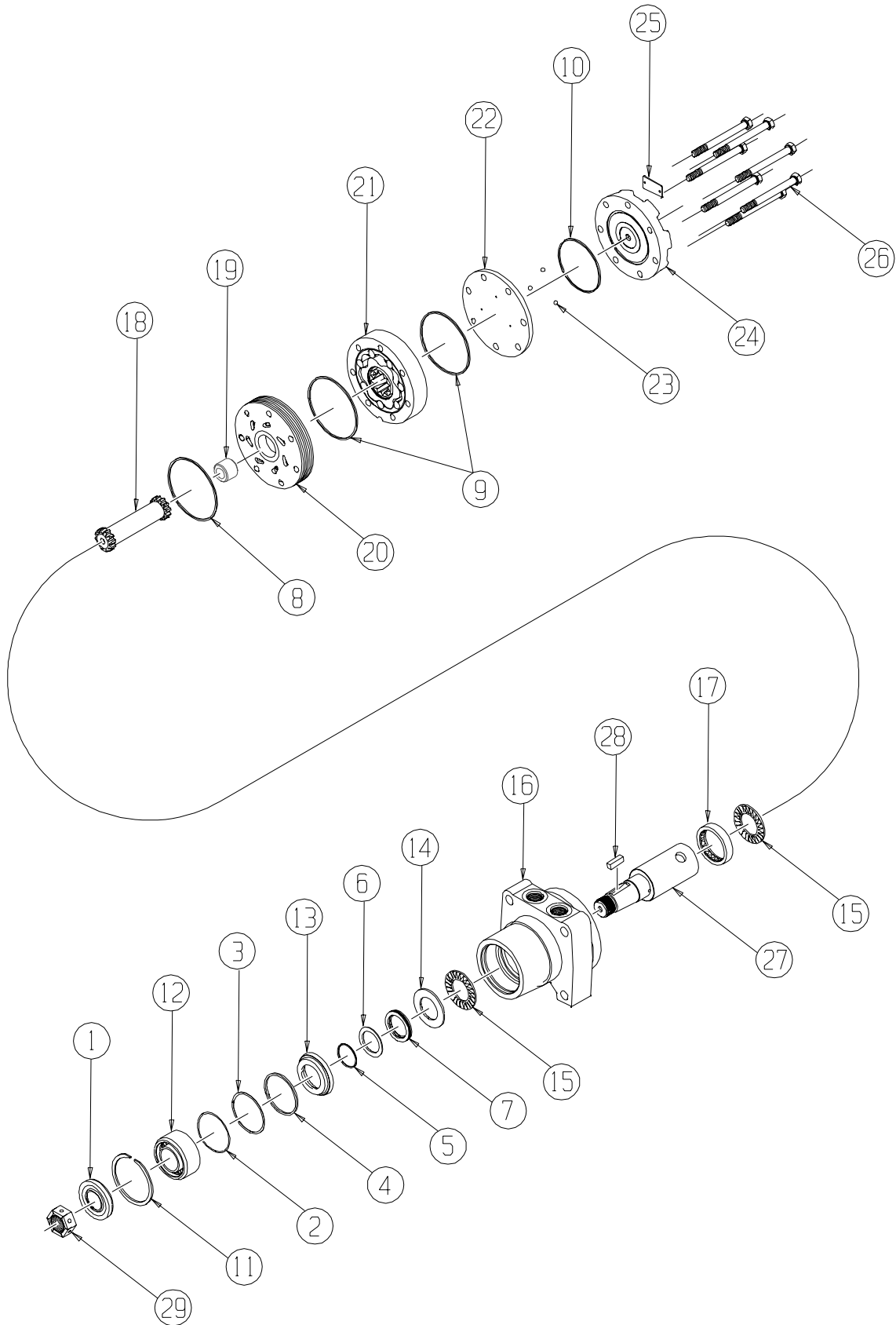
SHAFTS AND RELATED COMPONENTS KITS

SHAFT KITS COME WITH RELATED SHAFT COMPONENTS (i.e. keys, nuts, etc.)

TO ORDER INDIVIDUAL SHAFT COMPONENTS (i.e. keys, nuts, bolts, washers or wire rings) USE THE KIT NUMBER FOR EACH INDIVIDUAL PART

EXPLODED VIEW ITEM #	27	28	NOT SHOWN	29	30	31
DESCRIPTION	SHAFT KIT	KEY KIT	NUT KIT	BOLT KIT	WASHER KIT	WIRE RING KIT
#02- 6-B SPLINE	500011600	---	---	---	---	---
#22- 1-1/4" TAPERED	500011300	500449101	---	---	---	---
#20- 1-1/4" STRAIGHT	500011200	500449102	---	500449301	500449302	500449201
#23- 14 TOOTH SPLINE	500011101	---	SEE MISC.	---	---	500449201
#10- 1" STRAIGHT	500011201	500449100	KITS LIST	---	---	---
#12- 25MM STRAIGHT	500011109	500449104	ABOVE	---	---	---
#24- 19 TOOTH SPLINE	500011102	---	---	---	---	500449201
#21- 32MM STRAIGHT	500011203	500449103	---	---	---	500449201
#19- 1" STRAIGHT EXTENDED	500011202	500449100	---	---	---	---
#01- 13 TOOTH SPLINE	500011114	---	---	---	---	---
#29- 12 TOOTH SPLINE (BK)	500011116	---	---	---	---	---
#26- 1-1/4" STR. NON-ANNEALED	500011214	---	---	---	---	---

RE (520) Series



RE (520) SERIES MOTOR COMPONENTS

SEAL KIT 500444001

DESCRIPTION	EXP VIEW ITEM #	KIT
DUST SEAL	1	
SPLIT WIRE RING	2	ITEMS # 1-10, 13 & 14
METAL BACKUP SHIM	3	INCLUDED IN SEAL KIT
HIGH PRESSURE SEAL	4	500444001
METAL BACKUP SHIM	5	
TEFLON BACKUP SHIM	6	
SHAFT SEAL	7	ITEMS # 1-10
REAR HOUSING SEAL	8	INCLUDED IN SEAL KIT
BODY SEALS (2)	9	500444002
ENDCOVER SEAL	10	
SEAL CARRIER	13	ITEMS #13-14
THRUST WASHER	14	INCLUDED IN SEAL KIT
		500444003

MISCELLANEOUS KITS

DESCRIPTION	EXPLODED VIEW ITEM #	KIT
RETAINING SNAP RING	11	500018141
72MM BEARING	12	500018098
THRUST BEARING	15	500018059
REAR HOUSING BEARING	17	500018002
FORWARD MANIFOLD	20	500015006
REVERSE MANIFOLD	20	500015007
BALANCE PLATE (3 BALLS INCLD)	22	500012001
STEEL BALL (3)	23	500018048
ENDCOVER	24	500016001
DUST SEAL ONLY	1	500018006
1000 PSI RELIEF VALVE	NOT SHOWN	500018228
2000 PSI RELIEF VALVE	NOT SHOWN	500018231
3000 PSI RELIEF VALVE	NOT SHOWN	500018221
1.00-20 UNEF SLOTTED NUT	29	500449304
1.00-20 UNEF SOLID NUT	29	500449303
1.00-20 UNEF LOCK NUT	29	300339303P

ROTORS, DRIVE LINKS AND SPACERS, AND BOLTS

WHEN CHANGING MOTOR DISPLACEMENTS, A MATCHING ROTOR AND BOLT SET KIT MUST BE ORDERED. A NEW DRIVE LINK KIT MAY BE NECESSARY. DRIVE LINK SPACERS ARE INCLUDED IN DRIVE LINK KITS, BUT MAY ALSO BE ORDERED SEPERATELY BY USING THE DRIVE LINK SPACER KIT NUMBER.

EXPLODED VIEW ITEM #	21	21	18	19	26
DISPLACEMENT	STANDARD ROTOR KIT	FREETURN ROTOR KIT	DRIVE LINK KIT	DRIVE LINK SPACER KIT	BOLT SET KIT
120	500087005	500087008	500014009	---	500445006
160	500137005	500137011	500014009	---	500445006
200	500167004	500167011	500014009	500018075	500445012
230	500147002	500147004	500014009	500018185	500445014
260	500227000	500227004	500014009	500018076	500445014
300	500247005	500247011	500014007	---	500445018
350	500207000	500207004	500014008	500018076	500445026
375	500307005	500307011	500014008	---	500445024
470	500357003	500357005	500014008	500018076	500445026
540	500407005	500407011	500014008	500018077	500445032
750	500607005	500607011	500014008	500018078	500445045

HOUSING KITS

(EXPLODED VIEW ITEM #16)

STANDARD HOUSING KITS INCLUDE BEARINGS (#12 & 17), DUST SEAL (#1) AND RETAINING SNAP RING (#11) INSTALLED IN THE HOUSING.

DESCRIPTION	HOUSING KIT	DESCRIPTION	HOUSING KIT
#W31- WHEEL MOUNT W/ 7/8" O-RING	500130928	#A51- 6-HOLE SAE "A" STYLE W/ 7/8" O-RING PORTS	500135228
#W38- WHEEL MOUNT W/1/2" BSP.F	500131428	#A58- 6-HOLE SAE "A" STYLE W/ 1/2" BSP.F PORTS	500135628
#W31- WHEEL MOUNT W/7/8" O-RING W/VALVE CAVITY	500133928	#A57- 6-HOLE SAE "A" STYLE W/ MANIFOLD PORTS	500135828
#W38- WHEEL MOUNT W/1/2" BSP.F W/VALVE CAVITY	500134428	#A51- 6-HOLE SAE "A" STYLE W 7/8" O-RING W/VAL. CAVITY	500138228

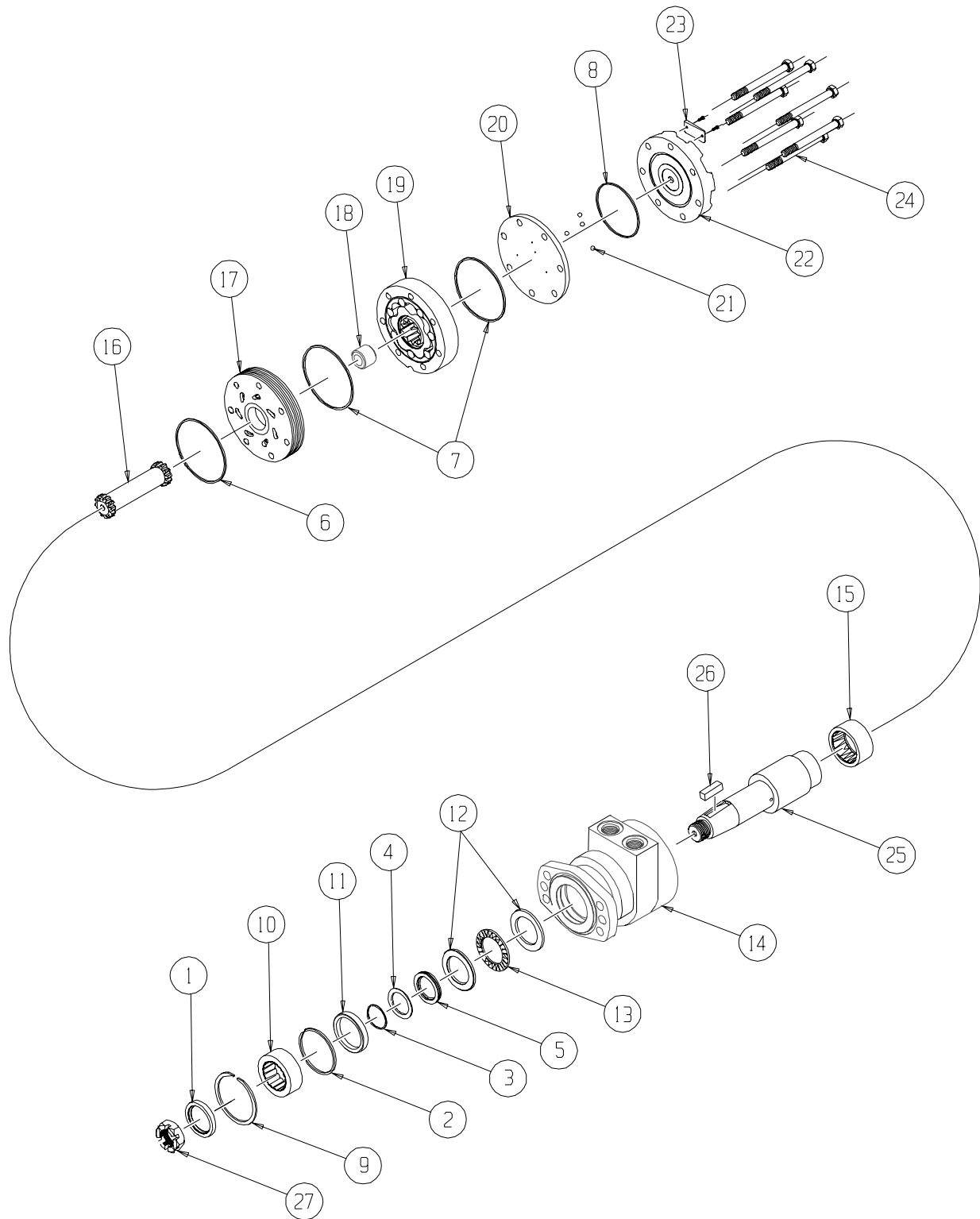
SHAFTS AND RELATED COMPONENTS KITS

SHAFT KITS COME WITH RELATED SHAFT COMPONENTS (i.e. keys, nuts, etc.)

TO ORDER INDIVIDUAL SHAFT COMPONENTS (i.e. keys, nuts, bolts, washers or wire rings) USE THE KIT NUMBER FOR EACH INDIVIDUAL PART.

EXPLODED VIEW ITEM #	27	28	29	NOT SHOWN	NOT SHOWN	NOT SHOWN
DESCRIPTION	SHAFT KIT	KEY KIT	NUT KIT	BOLT KIT	WASHER KIT	WIRE RING KIT
#25- 1-1/4" TAPERED	500011302	500449101		---	---	---
#07- 1-1/4" STRAIGHT	500011204	500119105		500449301	500449302	500449201
#09- 14 TOOTH SPLINE	500011107	---	SEE MISC.	---	---	500449201
#08- 32MM STRAIGHT	500011205	500449103	KITS LIST	---	---	500449201
#03- 6B SPLINE	500011602	---	ABOVE	---	---	---
#15- 1" STRAIGHT	500011206	500449100		---	---	---

RE (530) Series SAE "A" Flange



RE (530) SERIES "A" HOUSING MOTOR COMPONENTS

SEAL KIT 700666000

DESCRIPTION	EXP. VIEW ITEM #	KIT
DUST SEAL	1	
HIGH PRESSURE SEAL	2	
METAL BACKUP SHIM	3	ITEMS # 1-8
TEFLON BACKUP SEAL	4	INCLUDED IN
SHAFT SEAL	5	SEAL KIT
REAR HOUSING SEAL	6	700666000
BODY SEALS (2)	7	
ENDCOVER SEAL	8	

MISCELLANEOUS KITS

DESCRIPTION	EXP. VIEW ITEM #	KIT
RETAINING SNAP RING	9	500018141
1.5" BEARING	10	500018241
SEAL CARRIER	11	500018238
THRUST WASHER	12	700018041
THRUST BEARING	13	700018033
REAR HOUSING BEARING	15	700018012
FORWARD MANIFOLD (CCW OR "0")	17	500015006
REVERSE MANIFOLD (CW OR "1")	17	500015007
BALANCE PLATE (3 BALLS INCLD)	20 & 21	500012001
STEEL BALL	21	500018048
ENDCOVER	22	500016001
1000 PSI RELIEF VALVE	NOT SHOWN	500018228
2000 PSI RELIEF VALVE	NOT SHOWN	500018231
3000 PSI RELIEF VALVE	NOT SHOWN	500018221
1.125-18 UNEF SLOTTED HEX NUT	30	700018038
1.125-18 UNEF SOLID HEX NUT	30	700018054

ROTORS, DRIVE LINKS AND SPACERS, AND BOLTS

WHEN CHANGING MOTOR DISPLACEMENTS, A MATCHING ROTOR AND BOLT SET KIT MUST BE ORDERED. A NEW DRIVE LINK KIT MAY BE NECESSARY. DRIVE LINK SPACERS ARE INCLUDED IN DRIVE LINK KITS, BUT MAY ALSO BE ORDERED SEPERATELY BY USING THE DRIVE LINK SPACER KIT NUMBER

EXPLODED VIEW ITEM #	19	19	16	18	24
DISPLACEMENT	STANDARD ROTOR KIT	FREETURN ROTOR KIT	DRIVE LINK KIT	DRIVE LINK SPACER KIT	BOLT SET KIT
120	500087005	500087008	500014009	---	500445006
160	500137005	500137011	500014009	---	500445006
200	500167004	500167011	500014009	500018075	500445012
230	500147002	500147004	500014009	500018185	500445014
260	500227000	500227004	500014009	500018076	500445014
300	500247005	500247011	500014007	---	500445018
350	500207000	500207004	500014008	500018076	500445026
375	500307005	500307011	500014008	---	500445024
470	500357003	500357005	500014008	500018076	500445026
540	500407005	500407011	500014008	500018077	500445032
750	500607005	500607011	500014008	500018078	500445045

HOUSING KITS

(EXPLODED VIEW ITEM #14)

STANDARD HOUSING KITS INCLUDE REAR BEARING (#15) INSTALLED IN THE HOUSING.

DESCRIPTION	HOUSING KIT
#A51- 6-HOLE SAE "A" STYLE FLANGE W/ 7/8" O-RING PORTS	500136228
#A51- 6-HOLE SAE "A" STYLE FLANGE W/ 7/8" O-RING PORTS & VALVE CAVITY	500139228
#A58- 6-HOLE SAE "A" STYLE FLANGE W/ 1/2" BSP.F PORTS	500136628
#A58- 6-HOLE SAE "A" STYLE FLANGE W/ 1/2" BSP.F & VALVE CAVITY	500139628

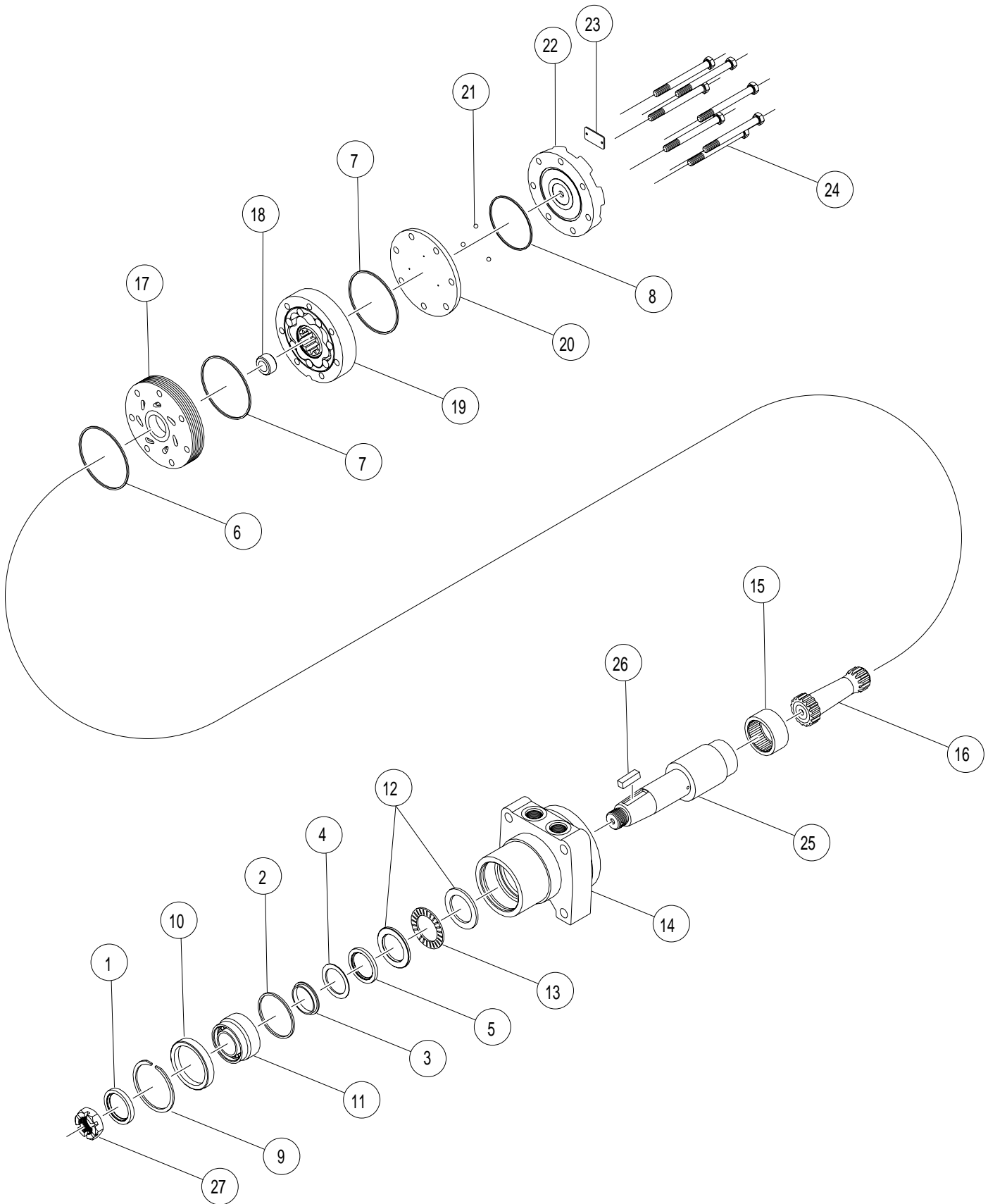
SHAFTS AND RELATED COMPONENTS KITS

SHAFT KITS COME WITH RELATED SHAFT COMPONENTS (i.e. keys, nuts, etc.)

TO ORDER INDIVIDUAL SHAFT COMPONENTS (i.e. keys, nuts, bolts, washers or wire rings) USE THE KIT NUMBER FOR EACH INDIVIDUAL PART.

EXPLODED VIEW ITEM #	25	26	27	NOT SHOWN
DESCRIPTION	SHAFT KIT	KEY KIT	NUT KIT	WIRE RING KIT
#30- 1-1/2" STRAIGHT	500011213	300339105	SEE MISC.	500449200
#31- 1-1/2" TAPERED	500011305	500449105	KITS LIST	---
#27- 35MM STRAIGHT	500011219	500449103		---

RE (530) Series "R" Housing



RE (530) SERIES "R" HOUSING MOTOR COMPONENTS

SEAL KIT 700666000

DESCRIPTION	EXP VIEW ITEM #	KIT
DUST SEAL	1	
HIGH PRESSURE SEAL	2	
METAL BACKUP SHIM	3	ITEMS # 1-8
TEFLON BACKUP SEAL	4	INCLUDED IN
SHAFT SEAL	5	SEAL KIT
REAR HOUSING SEAL	6	700666000
BODY SEALS (2)	7	
ENDCOVER SEAL	8	

MISCELLANEOUS KITS

DESCRIPTION	EXPLODED VIEW ITEM #	KIT
RETAINING SNAP RING	9	700018013
BEARING SPACER	10	700018085
1.5" BEARING	11	300018021
THRUST WASHER	12	700018041
THRUST BEARING	13	700018033
REAR HOUSING BEARING	15	700018012
FORWARD MANIFOLD (CCW OR "0")	17	500015006
REVERSE MANIFOLD (CW OR "1")	17	500015007
BALANCE PLATE (3 BALLS INCLD)	20 & 21	500012001
STEEL BALL	21	500018048
ENDCOVER	22	500016001
1000 PSI RELIEF VALVE	NOT SHOWN	500018228
2000 PSI RELIEF VALVE	NOT SHOWN	500018231
3000 PSI RELIEF VALVE	NOT SHOWN	500018221
1.125-18 UNEF SLOTTED HEX NUT	28	700018038
1.125-18 UNEF SOLID HEX NUT	28	700018054
DUST SEAL ONLY	1	300018006

ROTORS, DRIVE LINKS AND SPACERS, AND BOLTS

WHEN CHANGING MOTOR DISPLACEMENTS, A MATCHING ROTOR AND BOLT SET KIT MUST BE ORDERED. A NEW DRIVE LINK KIT MAY BE NECESSARY. DRIVE LINK SPACERS ARE INCLUDED IN DRIVE LINK KITS, BUT MAY ALSO BE ORDERED SEPERATELY BY USING THE DRIVE LINK SPACER KIT NUMBER.

EXPLODED VIEW ITEM #	19	19	16	18	24
DISPLACEMENT	STANDARD ROTOR KIT	FREETURN ROTOR KIT	DRIVE LINK KIT	DRIVE LINK SPACER KIT	BOLT SET KIT
120	500087005	500087008	500014009	---	500445006
160	500137005	500137011	500014009	---	500445006
200	500167004	500167011	500014009	500018075	500445012
230	500147002	500147004	500014009	500018185	500445014
260	500227000	500227004	500014039	---	500445014
300	500247005	500247011	500014007	---	500445018
350	500207000	500207004	500014008	500018076	500445026
375	500307005	500307011	500014008	---	500445024
470	500357003	500357005	500014008	500018076	500445026
540	500407005	500407011	500014008	500018077	500445032
750	500607005	500607011	500014008	500018078	500445045

HOUSING KITS (EXPLODED VIEW ITEM #14)

STANDARD HOUSING KITS INCLUDE REAR BEARING (#15) INSTALLED IN THE HOUSING.

DESCRIPTION	HOUSING KIT
#R31- WHEEL MOUNT WITH 7/8" O-RING	500132028
#R31- WHEEL MOUNT WITH 7/8" O-RING AND VALVE CAVITY	500135028

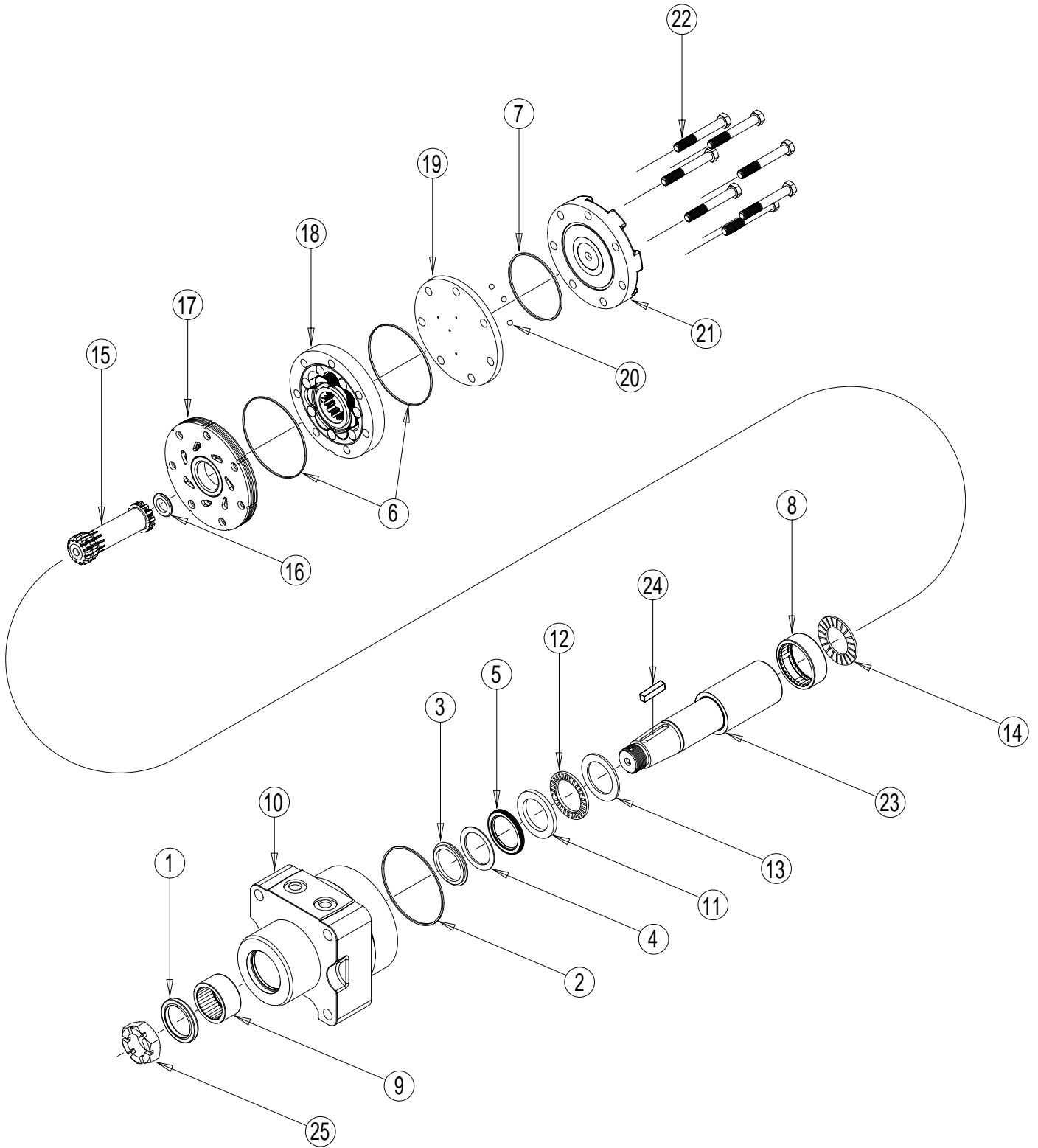
SHAFTS AND RELATED COMPONENTS KITS

SHAFT KITS COME WITH RELATED SHAFT COMPONENTS (i.e. keys, nuts, etc.)

TO ORDER INDIVIDUAL SHAFT COMPONENTS (i.e. keys, nuts, bolts, washers or wire rings) USE THE KIT NUMBER FOR EACH INDIVIDUAL PART.

EXPLODED VIEW ITEM #	25	26	27	NOT SHOWN
DESCRIPTION	SHAFT KIT	KEY KIT	NUT KIT	WIRE RING KIT
#30- 1-1/2" STRAIGHT	500011213	300339105	SEE MISC.	500449200
#31- 1-1/2" TAPERED	500011305	500449105	KITS LIST	---

RE (530) Series "T" Housing



RE (530) SERIES "T" HOUSING MOTOR COMPONENTS

MISCELLANEOUS KITS

DESCRIPTION	EXP. VIEW ITEM #	KIT
DUST SEAL	1	
HOUSING SEAL	2	
BACK UP RING	3	
BACK UP	4	ITEMS # 1-8
SHAFT SEAL	5	INCLUDED IN
BODY SEALS (2)	6	SEAL KIT
ENDCOVER SEAL	7	500444004
REAR HOUSING BEARING	8	

DESCRIPTION	EXPLODED VIEW ITEM #	KIT
FRONT HOUSING BEARING	9	530018000
FRONT THRUST WASHER	11	500018283
FRONT THRUST BEARING	12	500018282
THRUST WASHER	13	300018002
REAR THRUST BEARING	14	500018059
FORWARD MANIFOLD (CCW OR "0")	17	500015006
REVERSE MANIFOLD (CW OR "1")	17	500015007
BALANCE PLATE (3 BALLS INCLD)	19	500012001
STEEL BALL	20	500018048
ENDCOVER	21	500016001
1.125-18 UNEF SLOTTED HEX NUT	25	500449300
1.125-18 UNEF SOLID HEX NUT	25	700018054

ROTORS, DRIVE LINKS AND SPACERS, AND BOLTS

WHEN CHANGING MOTOR DISPLACEMENTS, A MATCHING ROTOR AND BOLT SET KIT MUST BE ORDERED. A NEW DRIVE LINK KIT MAY BE NECESSARY. DRIVE LINK SPACERS ARE INCLUDED IN DRIVE LINK KITS, BUT MAY ALSO BE ORDERED SEPERATELY BY USING THE DRIVE LINK SPACER KIT NUMBER.

EXPLODED VIEW ITEM #	18	18	15	16	22
DISPLACEMENT	STANDARD ROTOR KIT	FREETURN ROTOR KIT	DRIVE LINK KIT	DRIVE LINK SPACER KIT	BOLT SET KIT
120	500087005	500087008	500014009	---	500445006
160	500137005	500137011	500014009	---	500445006
200	500167004	500167011	500014009	500018075	500445012
230	500147002	500147004	500014009	500018185	500445014
260	500227000	500227004	500014009	500018076	500445014
300	500247005	500247011	500014007	---	500445018
350	500207000	500207004	500014008	500018076	500445026
375	500307005	500307011	500014008	---	500445024
470	500357003	500357005	500014008	500018076	500445026
540	500407005	500407011	500014008	500018077	500445032
750	500607005	500607011	500014008	500018078	500445045

HOUSING KITS

(EXPLODED VIEW ITEM #10)

DESCRIPTION	HOUSING KIT
#T31- WHEEL MOTOR WITH 7/8" O-RING	530013002
#T35- WHEEL MOTOR WITH 9/16" O-RING PORTS	530013000
#T38- WHEEL MOTOR WITH 1/2" BSP.F	530013001

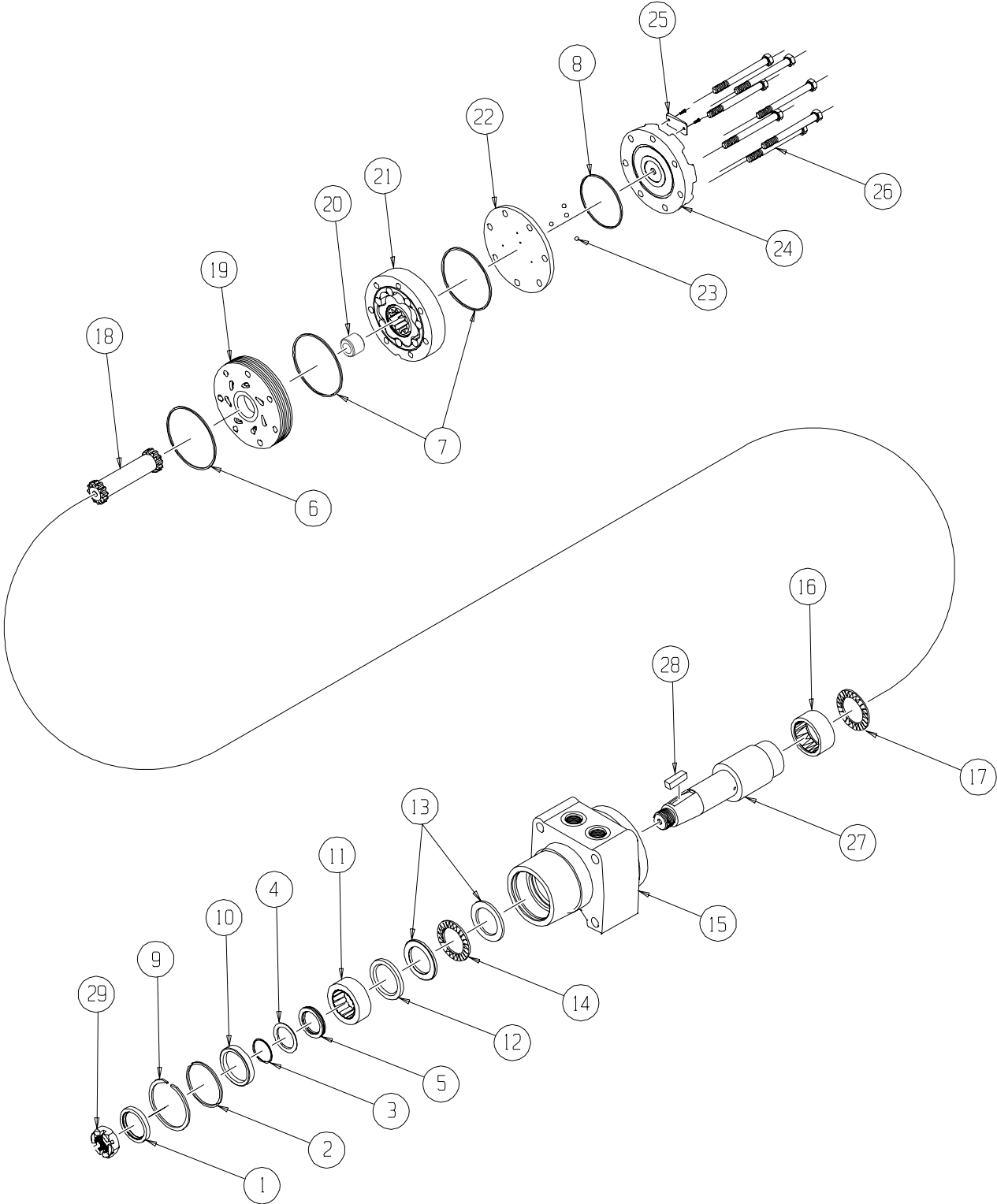
SHAFTS AND RELATED COMPONENTS KITS

SHAFT KITS COME WITH RELATED SHAFT COMPONENTS (i.e. keys, nuts, etc.)

TO ORDER INDIVIDUAL SHAFT COMPONENTS (i.e. keys, nuts, bolts, washers or wire rings) USE THE KIT NUMBER FOR EACH INDIVIDUAL PART.

EXPLODED VIEW ITEM #	23	24	25
DESCRIPTION	SHAFT KIT	KEY KIT	NUT KIT
#31- 1-1/2" TAPERED	500011311	500449105	SEE MISC.

RE (530) Series



RE (530) SERIES "W" HOUSING MOTOR COMPONENTS

SEAL KIT 700666000

DESCRIPTION	EXP. VIEW ITEM #	KIT
DUST SEAL	1	
HIGH PRESSURE SEAL	2	
METAL BACKUP SHIM	3	
TEFLON BACKUP SEAL	4	ITEMS # 1-8
SHAFT SEAL	5	INCLUDED IN
REAR HOUSING SEAL	6	SEAL KIT
BODY SEALS (2)	7	700666000
ENDCOVER SEAL	8	

MISCELLANEOUS KITS

DESCRIPTION	EXPLODED VIEW ITEM #	KIT
RETAINING SNAP RING	9	500018249
SEAL CARRIER	10	500018238
1.5" BEARING	11	500018242
BEARING SPACER	12	500018248
THRUST WASHER	13	700018041
FRONT THRUST BEARING	14	700018033
REAR HOUSING BEARING	16	700018012
REAR THRUST BEARING	17	500018059
FORWARD MANIFOLD (CCW OR "0")	19	500015006
REVERSE MANIFOLD (CW OR "1")	19	500015007
BALANCE PLATE (3 BALLS INCLD)	22 & 23	500012001
STEEL BALL	23	500018048
ENDCOVER	24	500016001
1000 PSI RELIEF VALVE	NOT SHOWN	500018228
2000 PSI RELIEF VALVE	NOT SHOWN	500018231
3000 PSI RELIEF VALVE	NOT SHOWN	500018221
1.125-18 UNEF SLOTTED HEX NUT	30	700018038
1.125-18 UNEF SOLID HEX NUT	30	700018054
M24 X 1.5 SLOTTED HEX NUT (#46)	30	500449306

ROTORS, DRIVE LINKS AND SPACERS, AND BOLTS

WHEN CHANGING MOTOR DISPLACEMENTS, A MATCHING ROTOR AND BOLT SET KIT MUST BE ORDERED. A NEW DRIVE LINK KIT MAY BE NECESSARY. DRIVE LINK SPACERS ARE INCLUDED IN DRIVE LINK KITS, BUT MAY ALSO BE ORDERED SEPERATELY BY USING THE DRIVE LINK SPACER KIT NUMBER

EXPLODED VIEW ITEM #	21	21	18	20	26
DISPLACEMENT	STANDARD ROTOR KIT	FREETURN ROTOR KIT	DRIVE LINK KIT	DRIVE LINK SPACER KIT	BOLT SET KIT
120	500087005	500087008	500014009	---	500445006
160	500137005	500137011	500014009	---	500445006
200	500167004	500167011	500014009	500018075	500445012
230	500147002	500147004	500014009	500018185	500445014
260	500227000	500227004	500014009	500018076	500445014
300	500247005	500247011	500014007	---	500445018
350	500207000	500207004	500014008	500018076	500445026
375	500307005	500307011	500014008	---	500445024
470	500357003	500357005	500014008	500018076	500445026
540	500407005	500407011	500014008	500018077	500445032
750	500607005	500607011	500014008	500018078	500445045

HOUSING KITS

(EXPLODED VIEW ITEM #15)

STANDARD HOUSING KITS INCLUDE REAR BEARING (#17) INSTALLED IN THE HOUSING.

DESCRIPTION	HOUSING KIT
#W31- WHEEL MOTOR WITH 7/8" O-RING PORTS	500136728
#W38- WHEEL MOTOR WITH 1/2" BSP.F PORTS	500137728

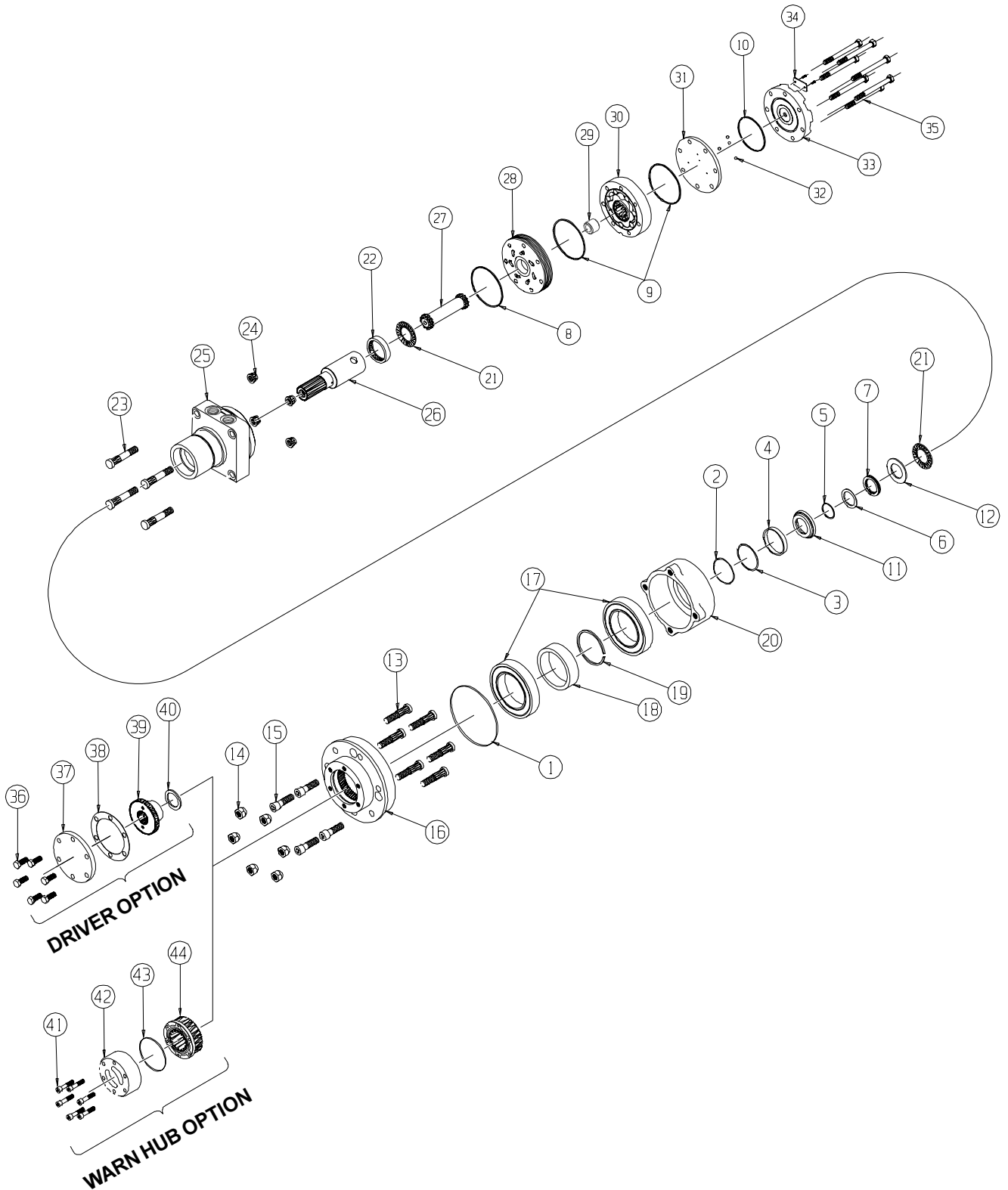
SHAFTS AND RELATED COMPONENTS KITS

SHAFT KITS COME WITH RELATED SHAFT COMPONENTS (i.e. keys, nuts, etc.)

TO ORDER INDIVIDUAL SHAFT COMPONENTS (i.e. keys, nuts, bolts, washers or wire rings) USE THE KIT NUMBER FOR EACH INDIVIDUAL PART.

EXPLODED VIEW ITEM #	27	28	29	NOT SHOWN
DESCRIPTION	SHAFT KIT	KEY KIT	NUT KIT	WIRE RING KIT
#31- 1-1/2" TAPERED	500011216	500449105		---
#22- 1-1/4" TAPERED	500011217	500449101	SEE MISC.	---
#30- 1-1/2" STRAIGHT	500011218	500449105	ABOVE	700449200
#28- 35MM TAPERED	500011310	500449104		---

RE (540) Series



RE (540) SERIES MOTOR COMPONENTS

SEAL KIT 500444125

DESCRIPTION	EXP. VIEW ITEM #	KIT
FLANGE SEAL	1	ITEMS # 1-10,38 INCLUDED IN SEAL KIT 500444125
WIRE RING	2	
METAL BACKUP SHIM	3	
HIGH PRESSURE SEAL	4	
METAL BACKUP SHIM	5	
TEFLON BACKUP SEAL	6	
SHAFT SEAL	7	
REAR HOUSING SEAL	8	
BODY SEAL	9	
ENDCOVER SEAL	10	
PAPER GASKET	38	
SEAL CARRIER	11	ITEMS # 11-12 INCLUDED IN SEAL KIT 500444003
THRUST WASHER	12	

MISCELLANEOUS KITS

DESCRIPTION	EXP. VIEW ITEM #	KIT
STUD	13	500018081
LUG NUT	14	500018151
(4) CAPSCREWS	15	500018086
WHEEL FLANGE	16	500013035
125MM BEARING	17	500018095
BEARING SPACER	18	500018194
THRUST RING	19	500018062
BEARING HUB	20	500013055
THRUST BEARING	21	500018059
REAR HOUSING BEARING	22	500018002
PLANETARY MOUNT STUD	23	500018081
MOUNTING NUT	24	500018112
FORWARD MANIFOLD (CCW OR "0")	28	500015006
REVERSE MANIFOLD (CW OR "1")	28	500015007
BALANCE PLATE (3 BALLS INCLD.)	31 & 32	500012001
STEEL BALL (3)	32	500018048
ENDCOVER	33	500016001
(6) DRIVER COVER SCREWS	36	500018085
DRIVER COVER	37	700018001
DRIVER	39	500018179
SPACER	40	500018114
LOCKING HUB ASSEMBLY	41-44	500018099

ROTORS, DRIVE LINKS AND SPACERS, AND BOLTS

WHEN CHANGING MOTOR DISPLACEMENTS, A MATCHING ROTOR AND BOLT SET KIT MUST BE ORDERED. A NEW DRIVE LINK KIT MAY BE NECESSARY. DRIVE LINK SPACERS ARE INCLUDED IN DRIVE LINK KITS, BUT MAY ALSO BE ORDERED SEPERATELY BY USING THE DRIVE LINK SPACER KIT NUMBER.

EXPLODED VIEW ITEM #	30	30	27	29	35
DISPLACEMENT	STANDARD ROTOR KIT	FREETURN ROTOR KIT	DRIVE LINK KIT	DRIVE LINK SPACER KIT	BOLT SET KIT
120	500087005	500087008	500014009	---	500445006
160	500137005	500137011	500014009	---	500445006
200	500167004	500167011	500014009	500018075	500445012
230	500147002	500147004	500014009	500018185	500445014
260	500227000	500227004	500014009	500018076	500445014
300	500247005	500247011	500014007	---	500445018
350	500207000	500207004	500014008	500018076	500445026
375	500307005	500307011	500014008	---	500445024
470	500357003	500357005	500014008	500018076	500445026
540	500407005	500407011	500014008	500018077	500445032
750	500607005	500607011	500014008	500018078	500445045

HOUSING KITS

(EXPLODED VIEW ITEM #25)

STANDARD HOUSING KITS INCLUDE REAR BEARING (#22) INSTALLED IN THE HOUSING.

DESCRIPTION	HOUSING KIT
#W31- SETBACK WITH 7/8" O-RING	500131023

INTERNAL SHAFT

EXPLODED VIEW ITEM #	26
DESCRIPTION	SHAFT KIT
#24- 19 TOOTH SPLINE	500011102